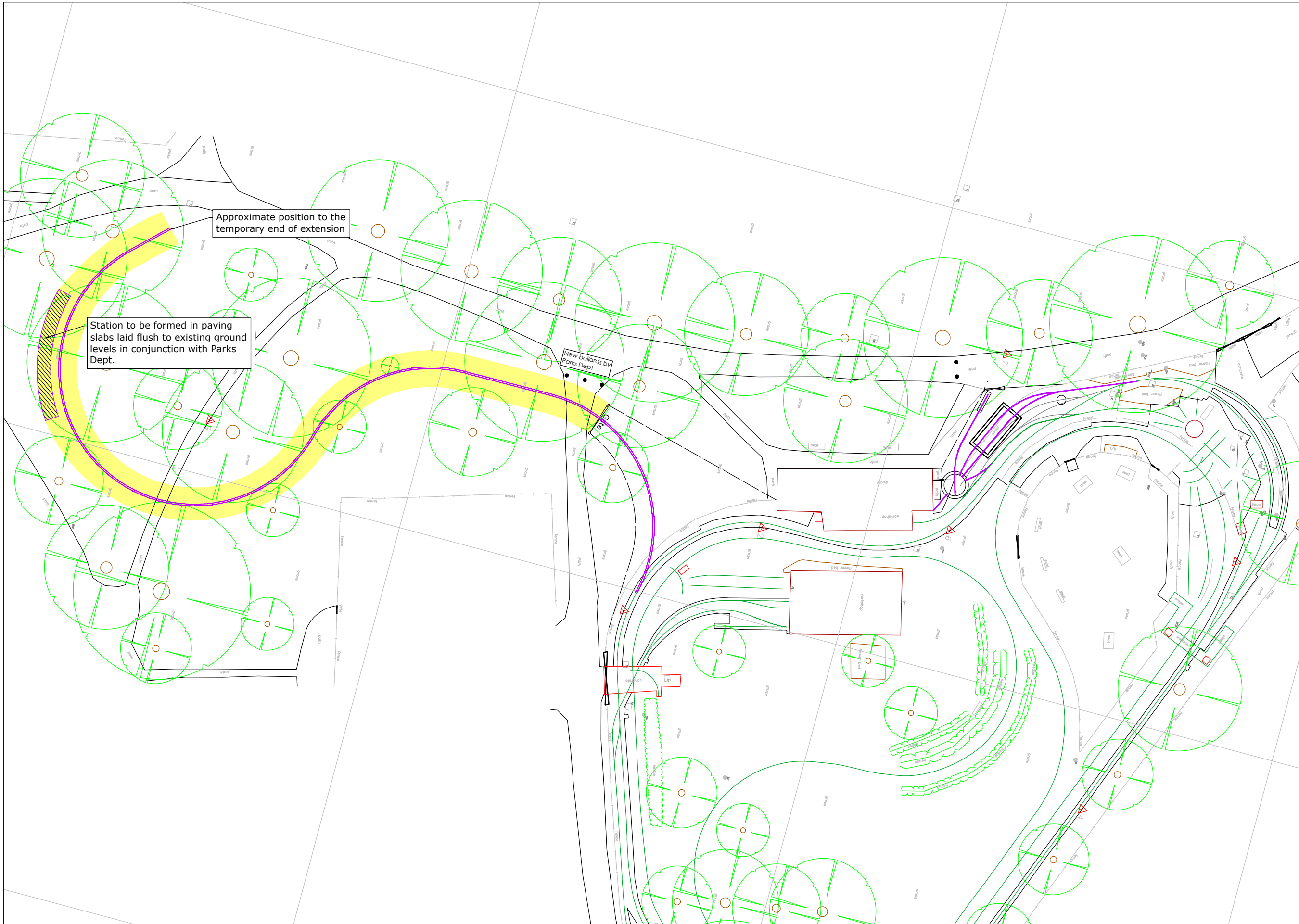


Area of Phase 2 Works



Approximate position to the temporary end of extension

Station to be formed in paving slabs laid flush to existing ground levels in conjunction with Parks Dept.

New bollards by Parks Dept

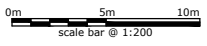
TITLE
Phase 2
Site Layout Plan
Proposed Railway Extension
C.O.S.M.E. Miniature Railway
Cutteslowe Park
Oxford

DRAWING NUMBER
TrackExt.-Plan-Phase 2

DATE
May 2015

DESIGNED BY
TST

SCALE
1:200 @ A1



STATUS
FOR INFORMATION

CLIENT C.O.S.M.E.	Rev	Drawn by	Chk'd by	Comments	Date
	-	TST	COSME	Initial Issue	22/05/15